



Oman Court, NW2

£2,600 Per Month

AVAILABLE TO LET is this bright and stylish two bedroom, two bathroom Penthouse apartment, offering 772 sq ft of spacious accommodation, situated close to Dollis Hill and Cricklewood.

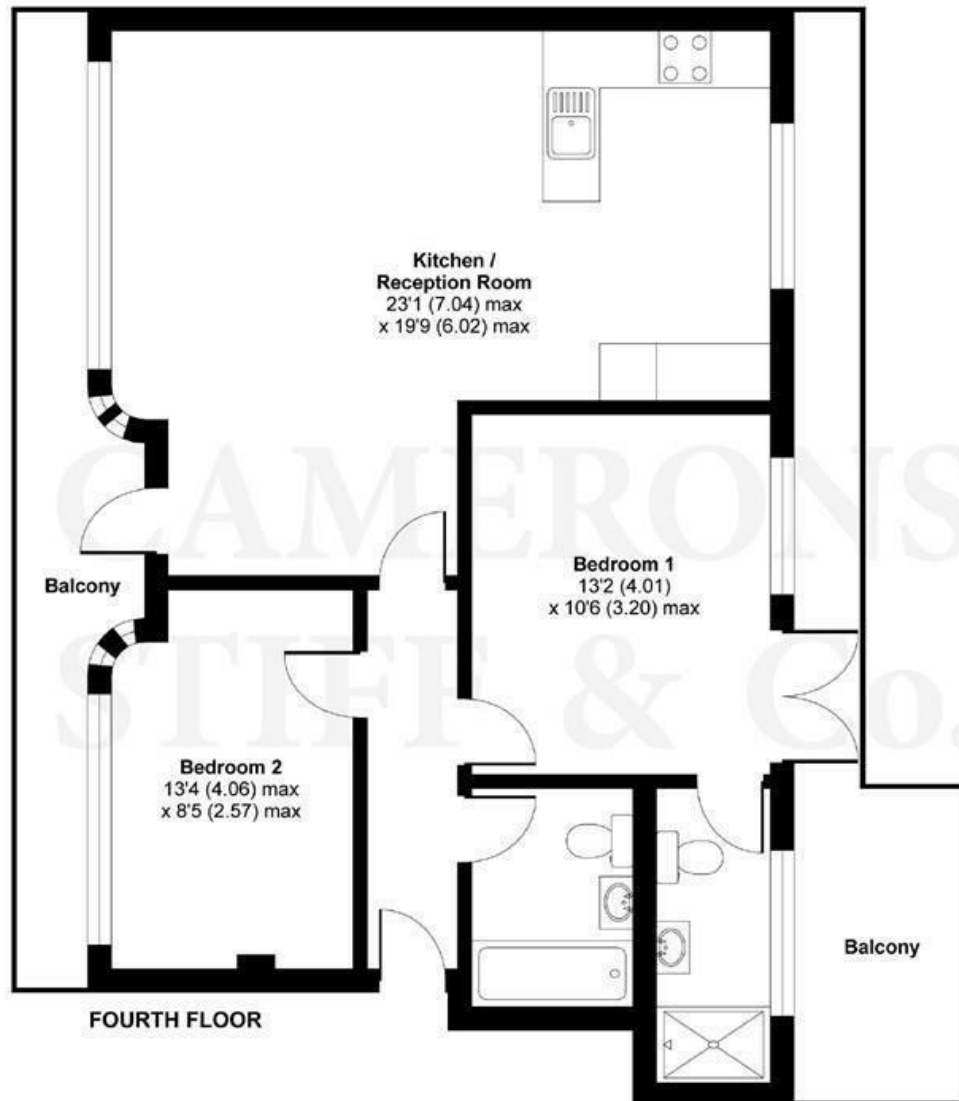
- Bright 2 bedroom, 2 bathroom Penthouse apartment
- Offering 772 sq ft of accommodation
- Modern fitted kitchen
- 2 full length balconies
- 2 spacious bedrooms with fitted wardrobes
- Easy access of Dollis Hill and Cricklewood stations
- Views over the beautiful Gladstone Park
- Deposit: £3000 Tax Band: Brent (C)



020 8450 9377 - 020 8459 1133
rentals@cameronsstiff.co.uk

Oman Avenue, London, NW2

APPROX. GROSS INTERNAL FLOOR AREA 772 SQ FT 71.7 SQ METRES



Whilst every attempt has been made to ensure the accuracy of the floor plan contained here, measurements of doors, windows and rooms are approximate and no responsibility is taken for any error, omission or misstatement. These plans are for representation purposes only as defined by RICS Code of Measuring Practice and should be used as such by any prospective purchaser. Specifically no guarantee is given on the total square footage of the property if quoted on this plan. Any figure given is for initial guidance only and should not be relied on as a basis of valuation.

Copyright nichecom.co.uk 2017 Produced for Camerons Stiff & Co REF : 219107

EPC: B

Ref: 15083576

